

COMPANY: DEER LAKE OIL & GAS INC.

WELL: DEER LAKE OIL & GAS ET AL

FIELD: WESTERN ADVENTURE N

EXPLOATORY

PROVINCE: NEWFOUNDLAND

PROVINCE: NEWFOUNDLAND		<div>Schlumberger</div> DUAL LATER		
Field:	EXPLOATORY	LOCATION		Elev
Location:	DEER LAKE OIL & GAS ET AL	NORTHING: 5,456,519		
Well:	DEER LAKE OIL & GAS INC.	EASTING: 482,797		
Company:	DEER LAKE OIL & GAS INC.	Permanent Datum: _____		GROUND LEVEL
		Log Measured From: _____		DRILL FLOOR
		Drilling Measured From: _____		DRILL FLOOR
		API Serial No.		NORTH
		2000-120-01-01		5,4
Logging Date	3-AUG-2000			
Run Number	1			
Depth Driller	872 m			
Schlumberger Depth	873.5 m			
Bottom Log Interval	868 m			
Top Log Interval	218 m			
Casing Driller Size @ Depth	114.300 mm @ 218 m			
Casing Schlumberger	218 m			
Bit Size	96.000 mm			
Type Fluid In Hole	POT. SULFATE			
Density	1044 kg/m3	35 s		
Fluid Loss	PH			
Source Of Sample	MEASURED			
RM @ Measured Temperature	0.539 ohm.m @ 15 degC			
RMF @ Measured Temperature	@			
RMC @ Measured Temperature	@			
Source RMF	RMC			
RM @ MRT	NO SAMPLE @ 22	NO SAMPLE @ 22		
Maximum Recorded Temperatures	22 degC			
Circulation Stopped	2-AUG-2000	22:00		
Logger On Bottom	3-AUG-2000	6:30		
Unit Number	19	DARTMOUTH		
Recorded By	KELLI SASCO			
Witnessed By	ROB TAYLOR			

IC.  
-AL  
O.1

D.F. 92.5 m



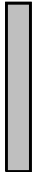



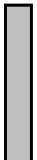
above Perm. Datum

56,519	482,797
--------	---------

482,797

<div>LOG</div> <div>R.B. 92.5 m</div> <div>G.L. 90 m</div> <div>D.F. 92.5 m</div> <div>/.: 90 m</div> <div>m above Perm. Datum</div>		<div>RTHING:</div> <div>56,519</div> <div>EASTING:</div> <div>482,797</div>		<div>Logging Date</div> <div>Run Number</div> <div>Depth Driller</div> <div>Schlumberger Depth</div> <div>Bottom Log Interval</div> <div>Top Log Interval</div> <div>Casing Driller Size @ Depth</div> <div>Casing Schlumberger</div> <div>Bit Size</div> <div>Type Fluid In Hole</div> <div>Density</div> <div>Fluid Loss</div> <div>Source Of Sample</div> <div>RM @ Measured Temperature</div> <div>RMF @ Measured Temperature</div> <div>RM @ Measured Temperature</div> <div>Source RMF</div> <div>RM @ MRT</div> <div>Maximum Recorded Temperatures</div> <div>Circulation Stopped</div> <div>Logger On Bottom</div> <div>Unit Number</div> <div>Recorded By</div> <div>Witnessed By</div>		<div>Run 1</div> <div>Run 2</div> <div>Run 3</div> <div>Run 4</div>	
ALL INTERPRETATIONS ARE OPINIONS BASED ON INFERENCES FROM ELECTRICAL OR OTHER MEASUREMENTS AND WE CANNOT, AND DO NOT GUARANTEE THE ACCURACY OR CORRECTNESS OF ANY INTERPRETATIONS, AND WE SHALL NOT, EXCEPT IN THE CASE OF GROSS OR WILLFUL NEGLIGENCE ON OUR PART, BE LIABLE OR RESPONSIBLE FOR ANY LOSS, COSTS, DAMAGES OR EXPENSES INCURRED OR SUSTAINED BY ANYONE RESULTING FROM ANY INTERPRETATION MADE BY ANY OF OUR OFFICERS, AGENTS OR EMPLOYEES. THESE INTERPRETATIONS ARE ALSO SUBJECT TO CLAUSE 4 OF OUR GENERAL TERMS AND CONDITIONS AS SET OUT IN OUR CURRENT PRICE SCHEDULE.		OTHER SERVICES1		OTHER SERVICES2			
OS1: DUAL LATEROLOG		OS1:		OS1:			
OS2: BHC SONIC		OS2:		OS2:			
OS3: COMPENSATED NEUTRON		OS3:		OS3:			
OS4: LITHO DENSITY		OS4:		OS4:			
OS5:		OS5:		OS5:			
REMARKS: RUN NUMBER 1		REMARKS: RUN NUMBER 2					
1ST DESCENT: DUAL LATEROLOG, GR							
2ND DESCENT: BHC SONIC, GR							
3RD DESCENT: COMPENSATED NEUTRON, LITHO DENSITY, GR							

CEMENT VOLUME BASED ON 66.7MM PRODUCTION CASING					
SCALES AND INTERVALS AS PER CLIENT REQUEST					
RIG:: LONGYEAR SUPER 50					
CREW 19: OTTO MARSHALL, MIKE DIGGDON					
RUN 1			RUN 2		
SERVICE ORDER #:		6418543	SERVICE ORDER #:		
PROGRAM VERSION:		9C0-413	PROGRAM VERSION:		
FLUID LEVEL:			FLUID LEVEL:		
LOGGED INTERVAL	START	STOP	LOGGED INTERVAL	START	STOP

EQUIPMENT DESCRIPTION					
RUN 1			RUN 2		
SURFACE EQUIPMENT					
LCM-AA WITM (DTS)-A					
DOWNHOLE EQUIPMENT					
BSP BRT-S				42.59	
	SP SPARC		—	24.42	
LEH-ST LEH-ST				18.20	
STGC-B STGH-B 8007 STGC0-A STGC1-B	Gamma Ray		—	16.77	17.29
			—	16.30	
	TelStatus		—	14.94	
AH-201 AH-201				14.94	
AH-216				14.39	
DTA-A ECH-KE DTA-A				14.14	
MDLT-A MDLH-A MDLI-A AH-189 MDLH-B MDLC-A MDLS-A				11.70	

MDLS-A  
MDLE

LLD LLS

4.56

BNS-CCS

HV DF  
Tension ACCZ

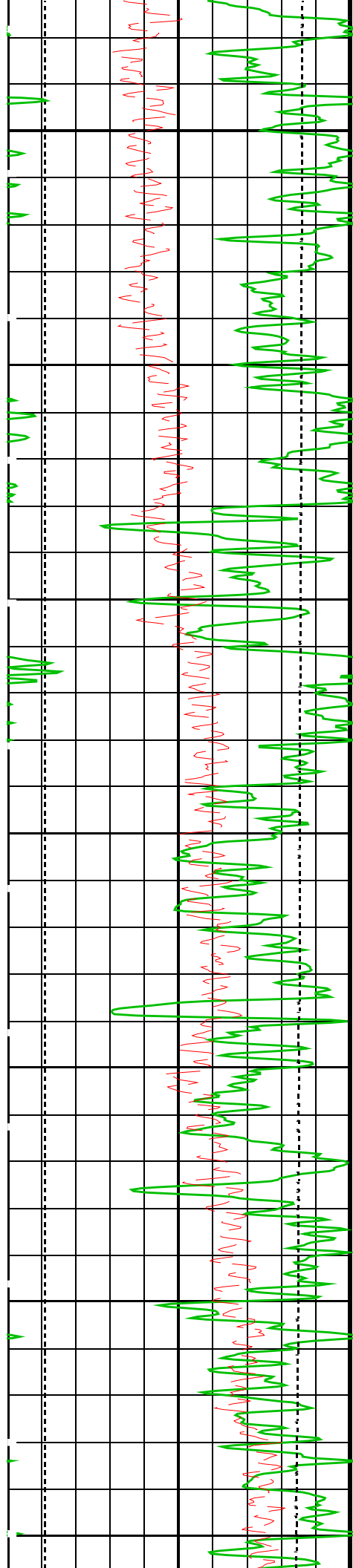
TOOL ZERO

0.00

0.14

MAXIMUM STRING DIAMETER 86 MM  
MEASUREMENTS RELATIVE TO TOOL ZERO  
ALL LENGTHS IN METERS

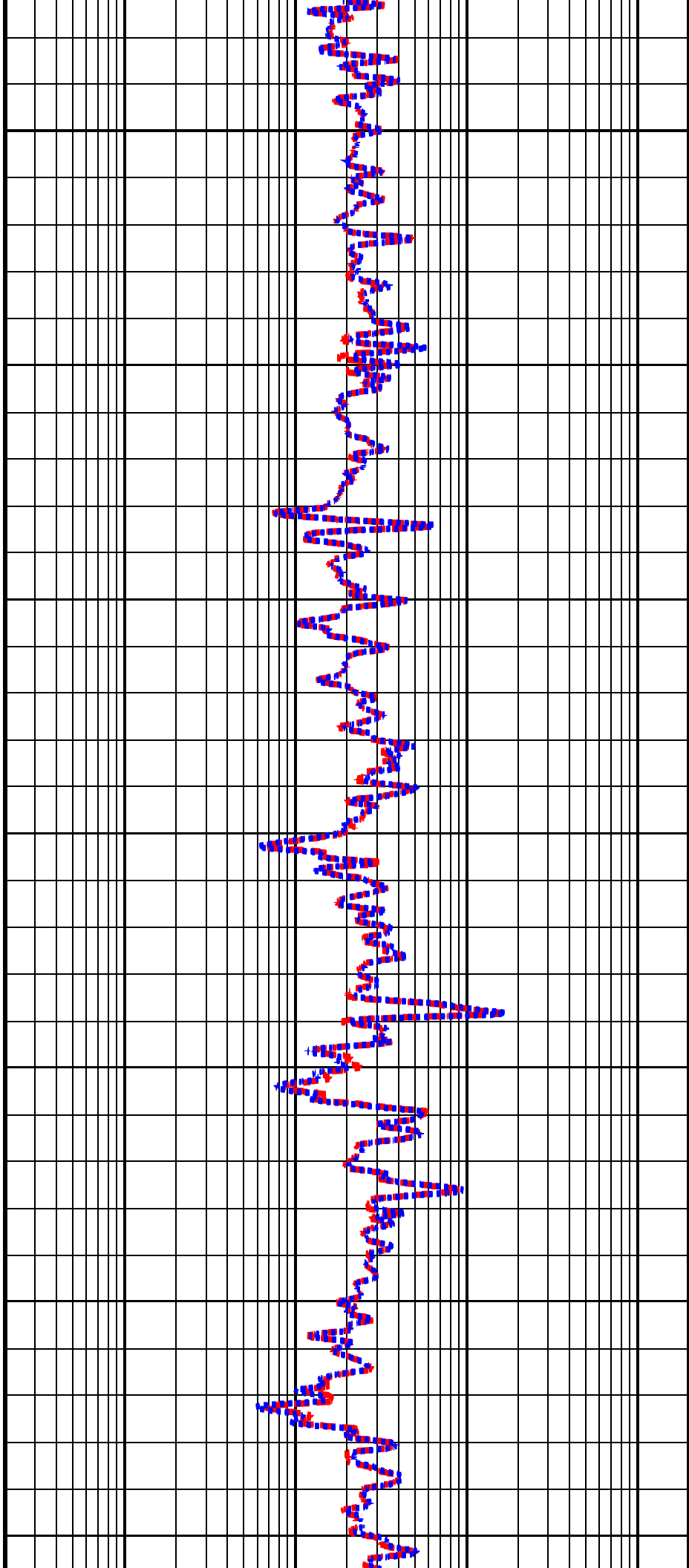


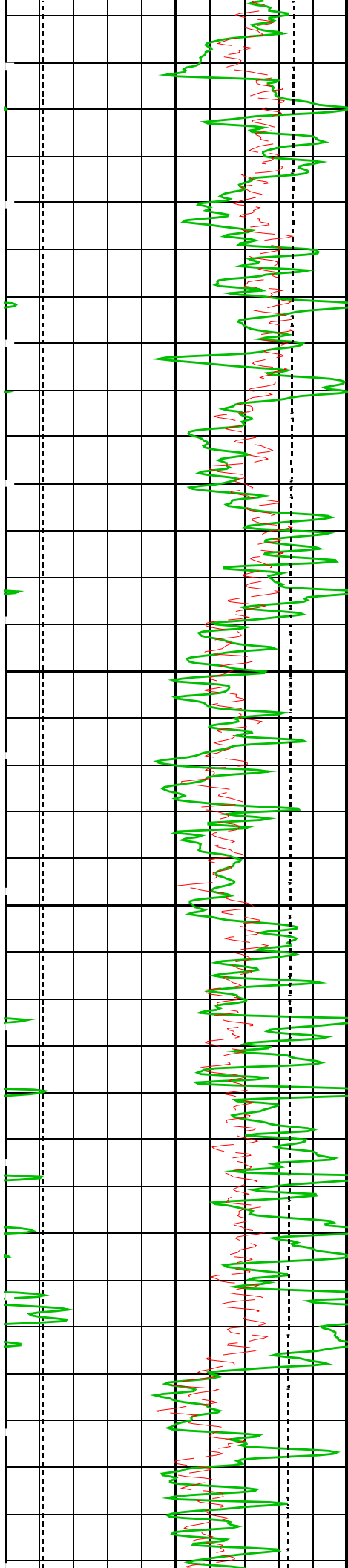


400

450

500

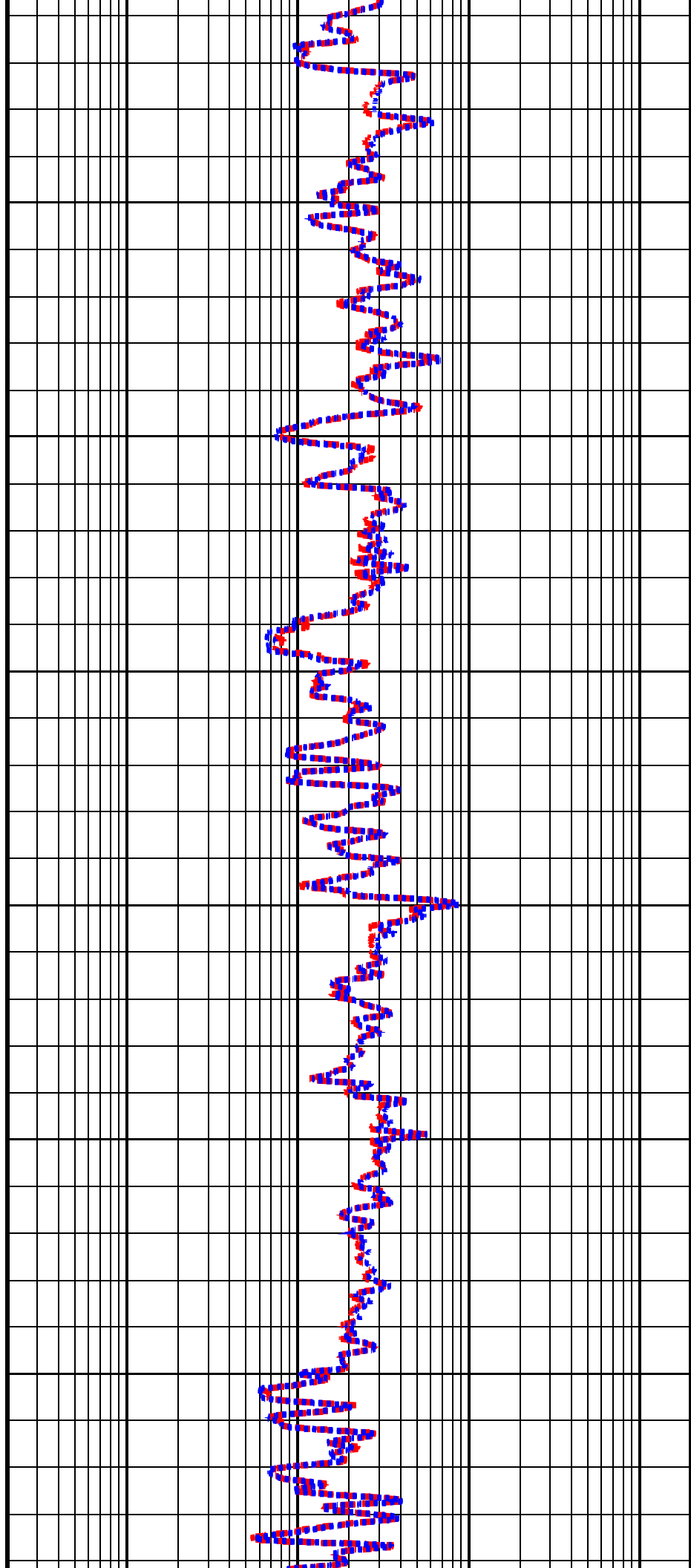


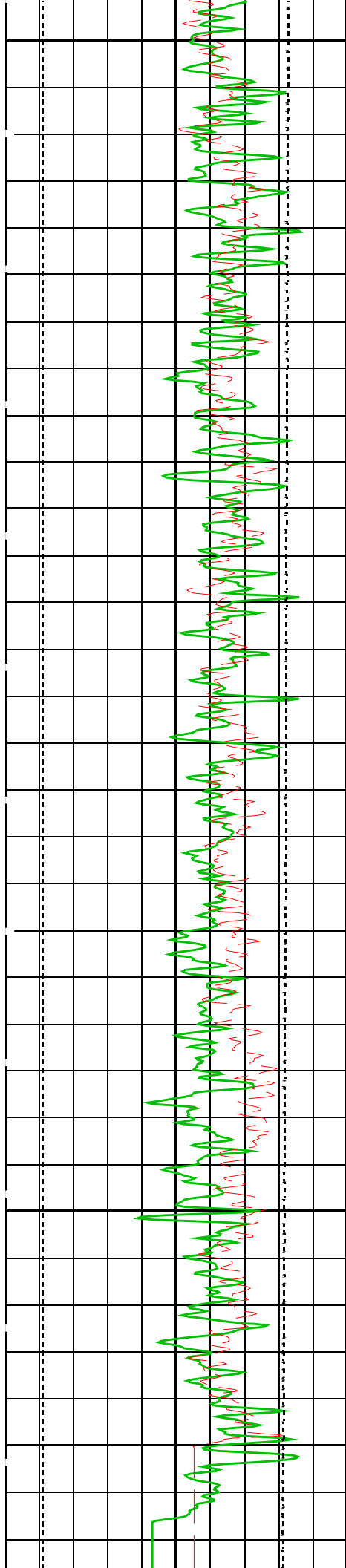


550

600

650



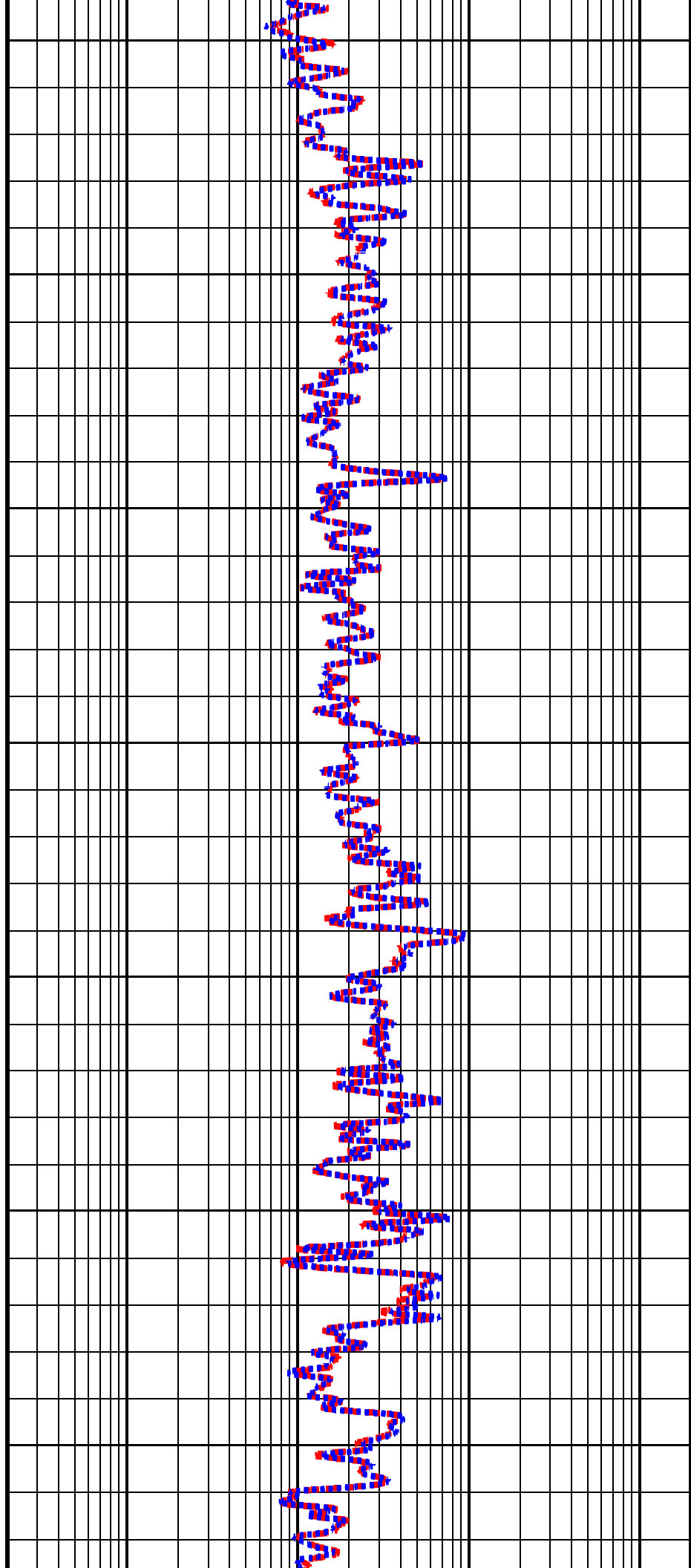


700

750

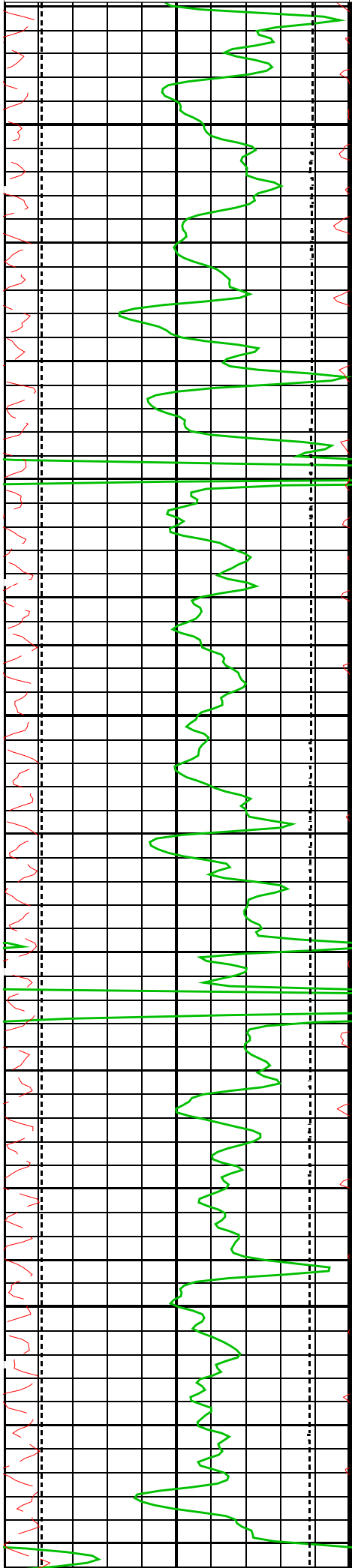
800

850







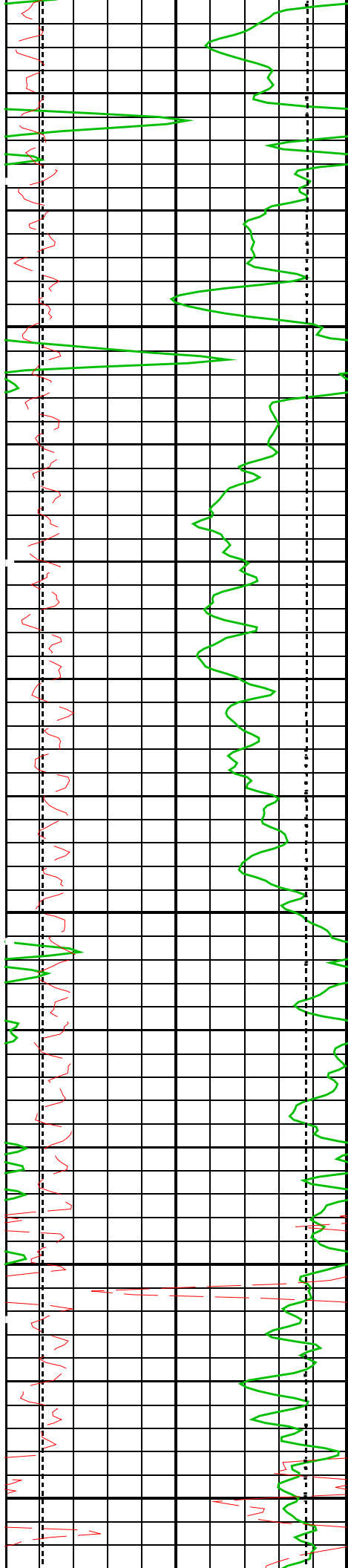


75

100

125

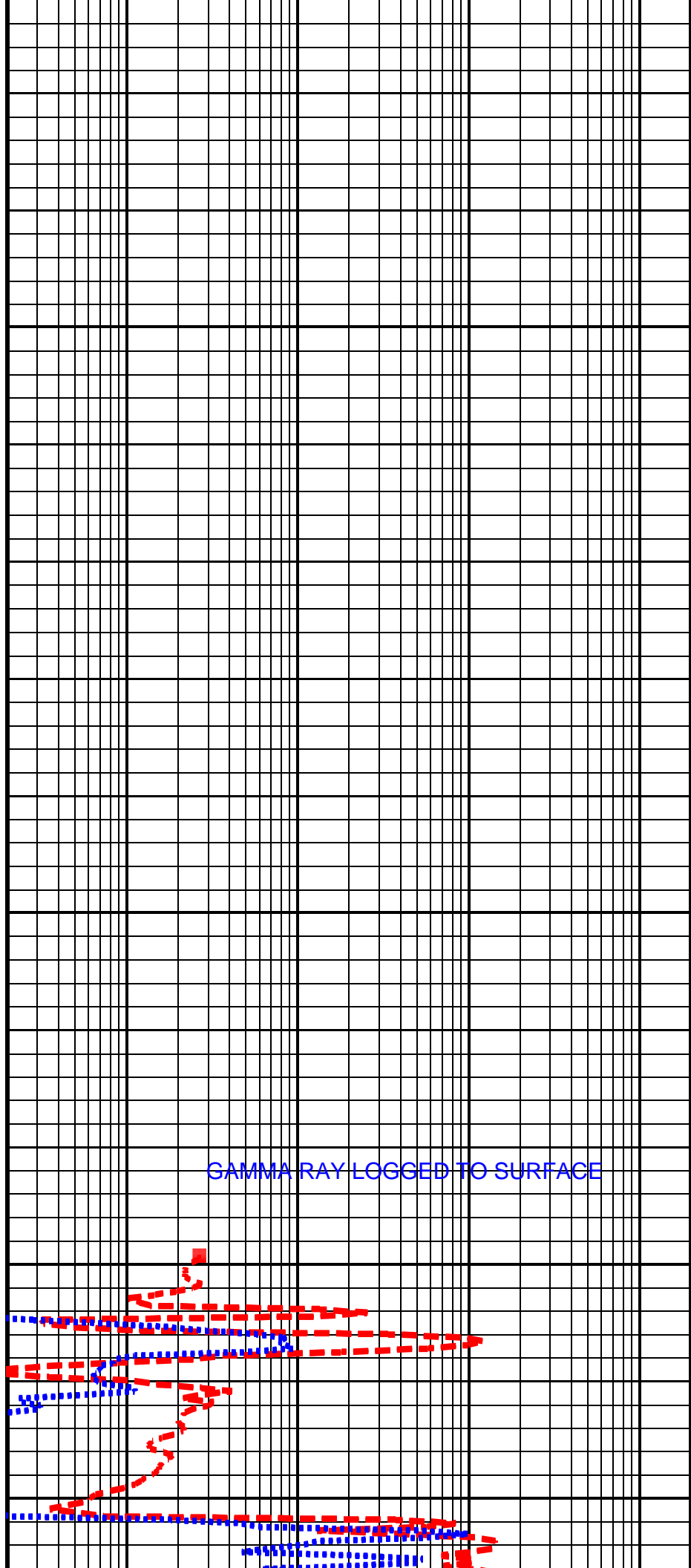
MAIN PASS



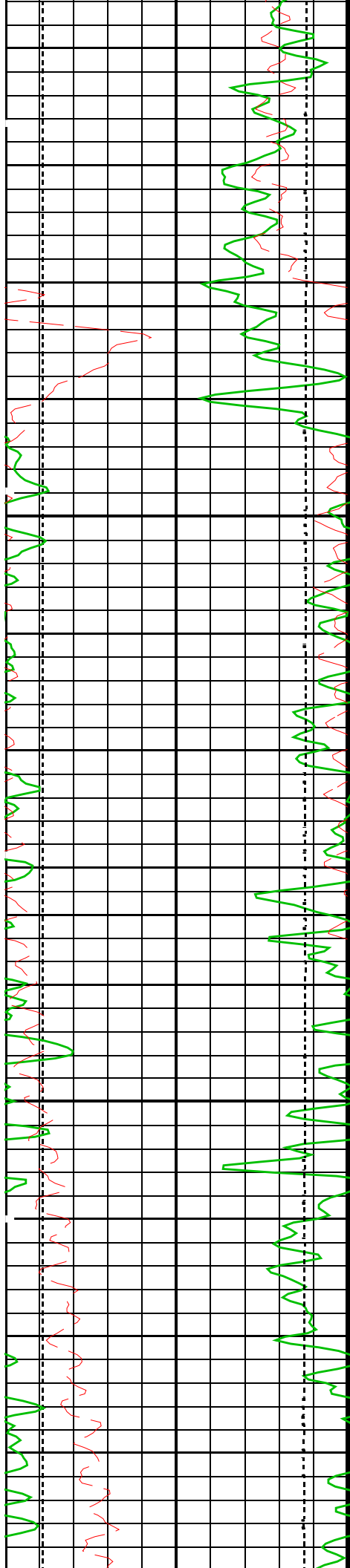
150

175

200



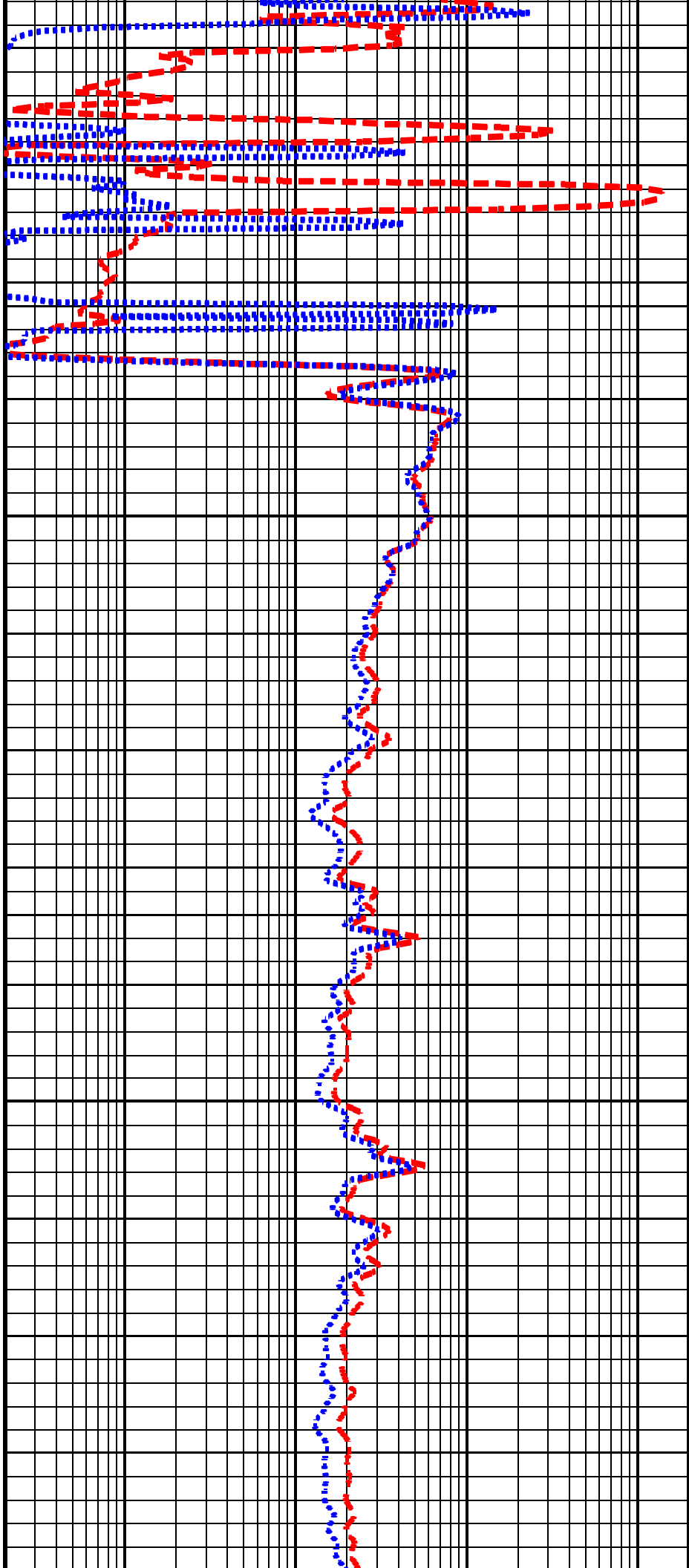
GAMMA RAY LOGGED TO SURFACE

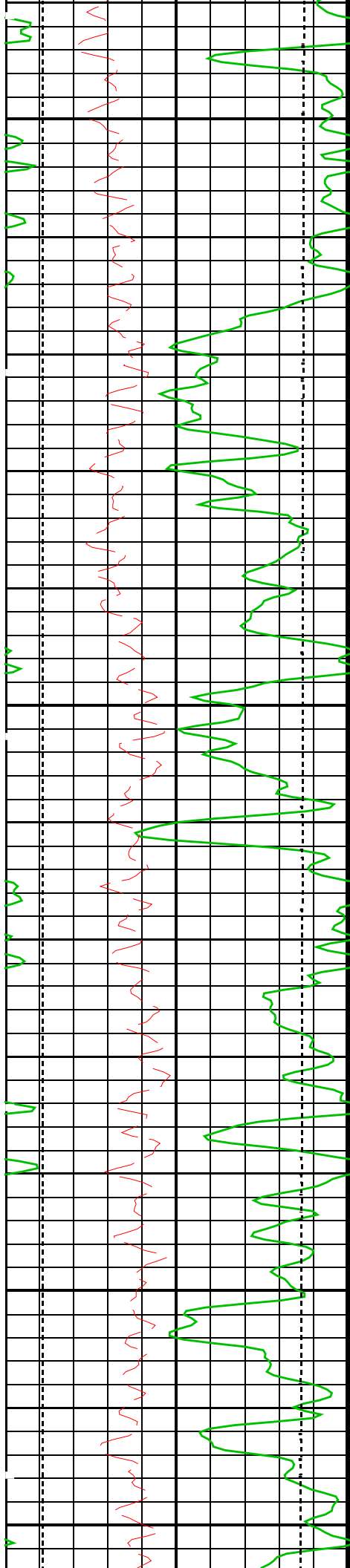


<--CD-->

225

250

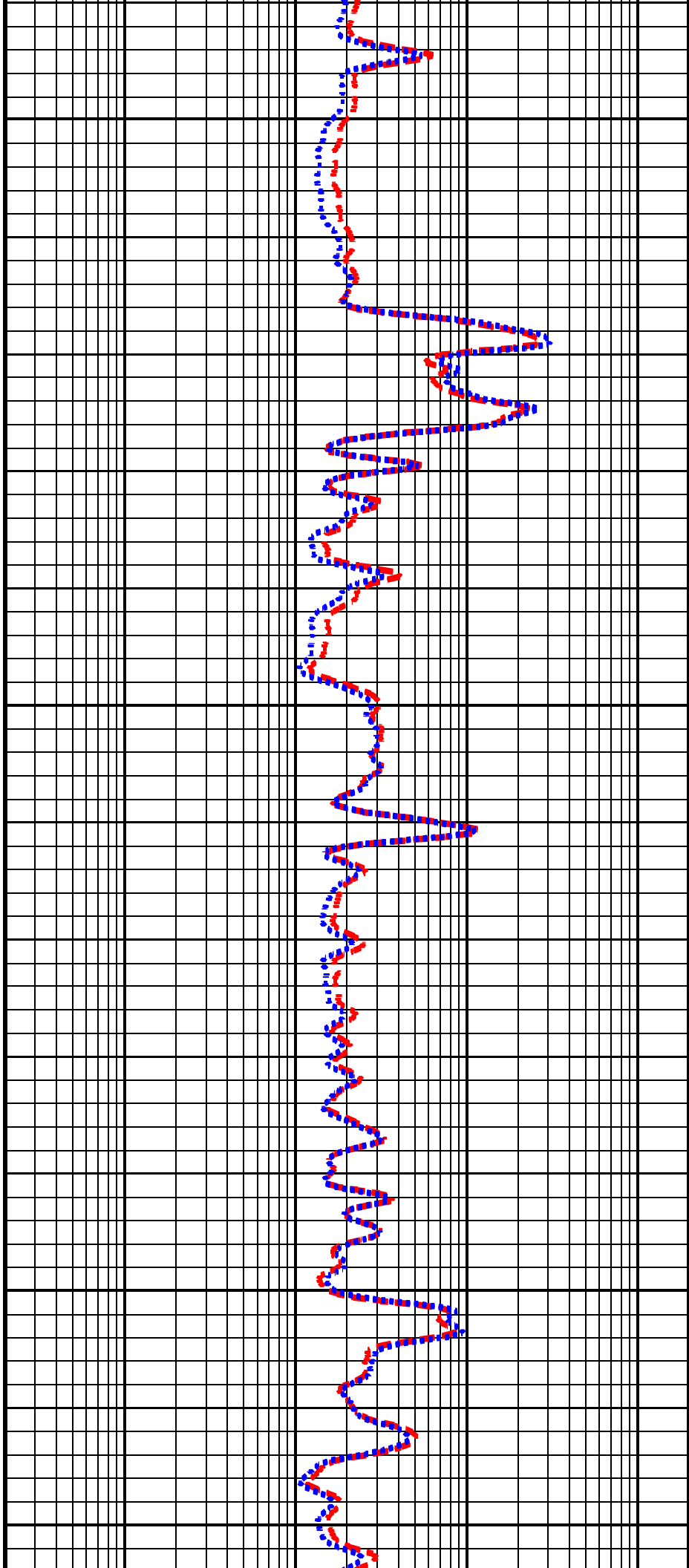


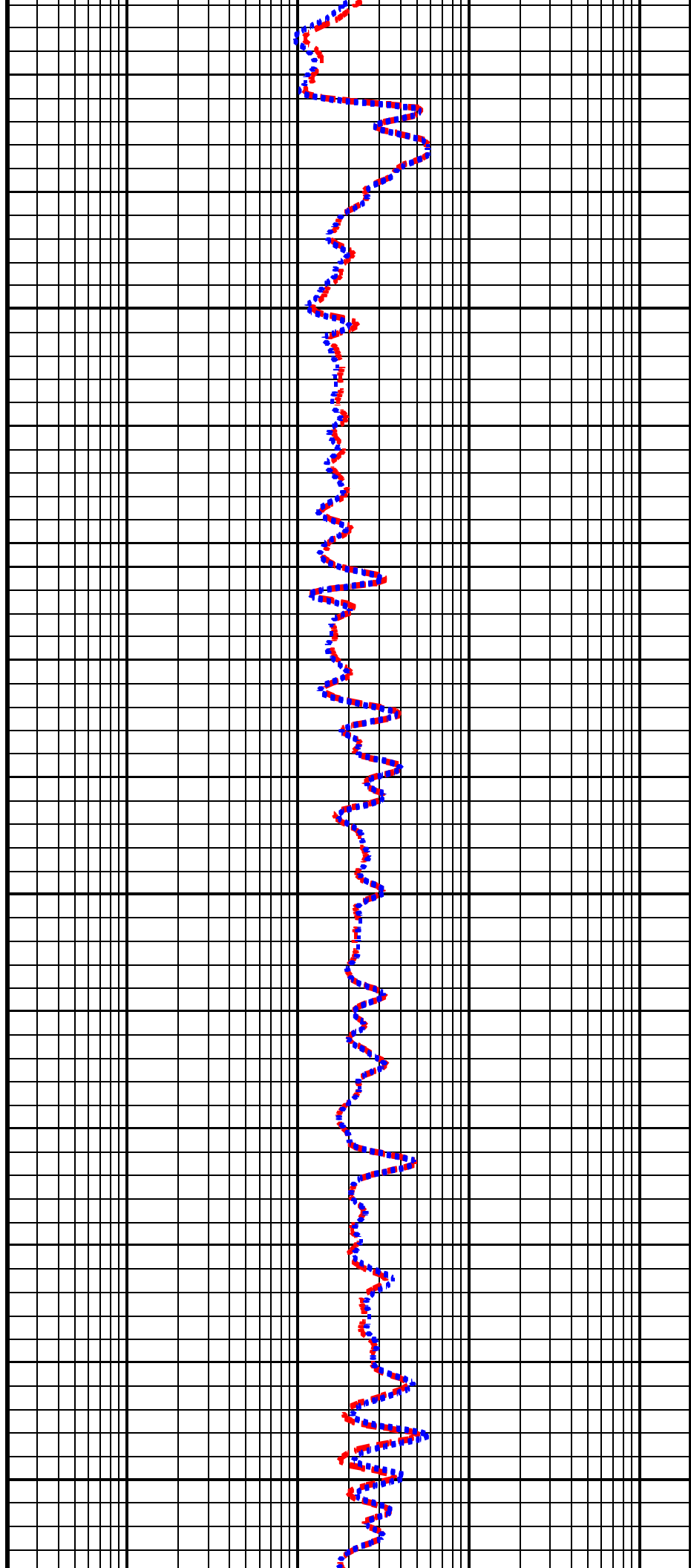
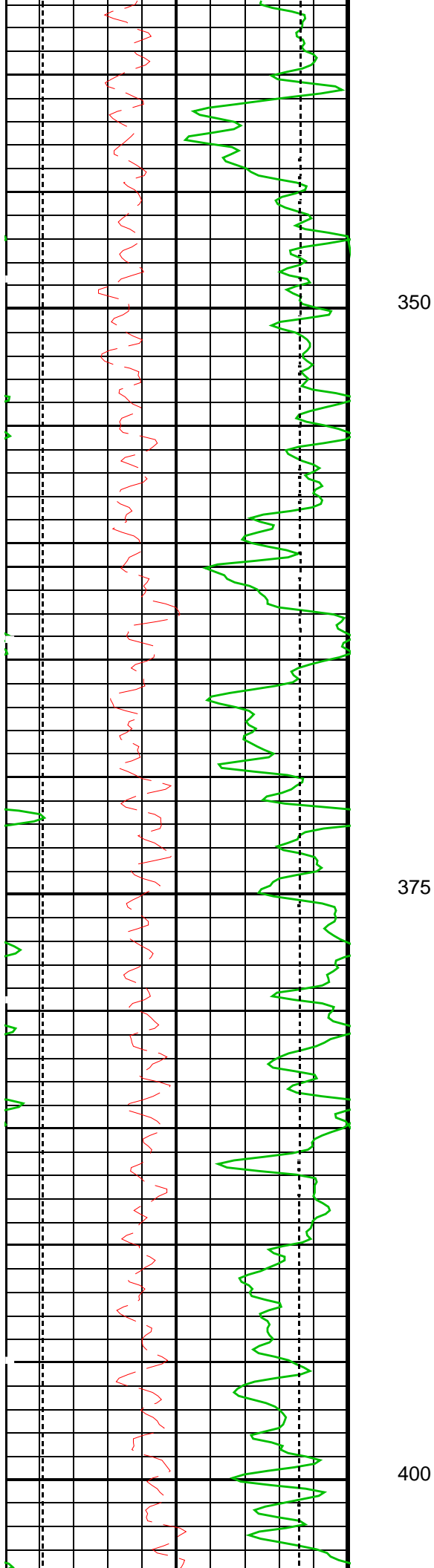


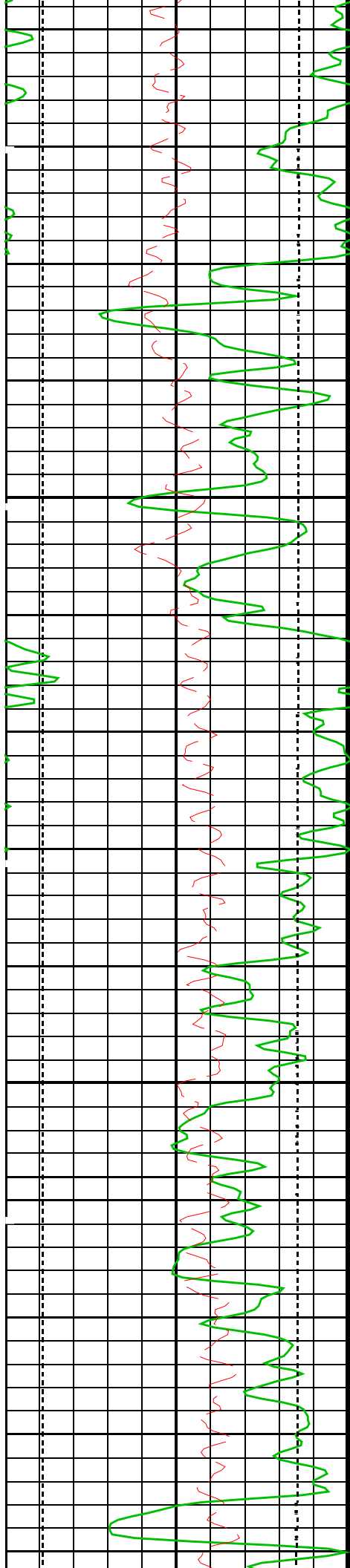
275

300

325

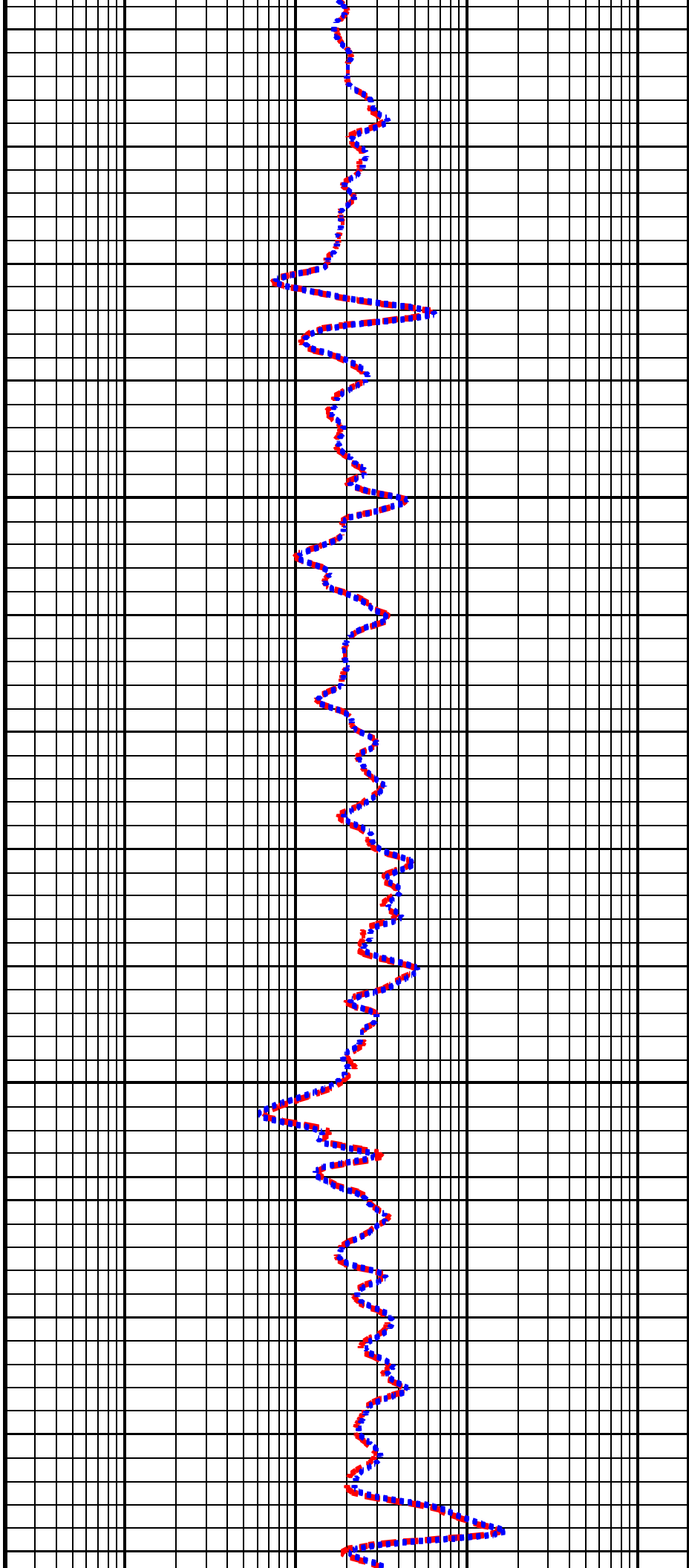


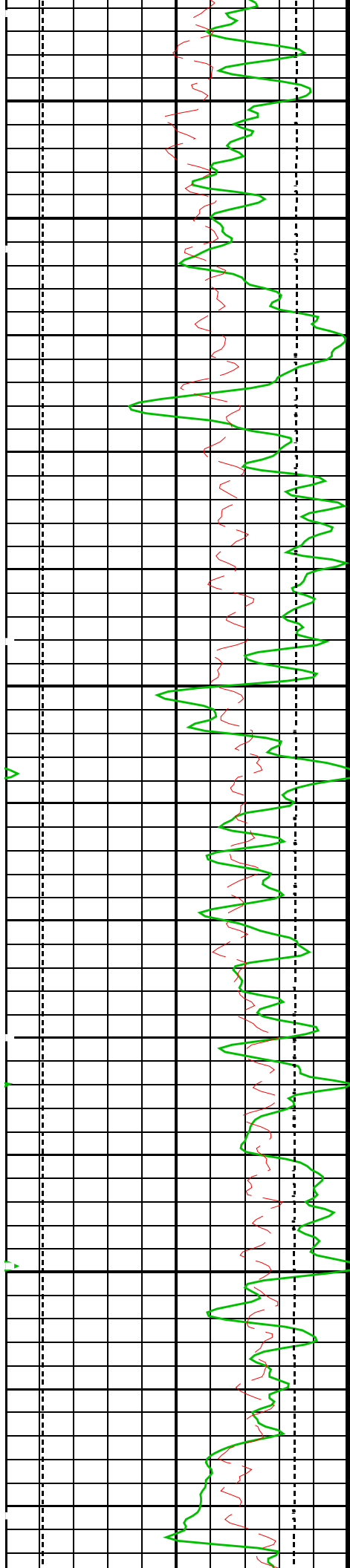




425

450

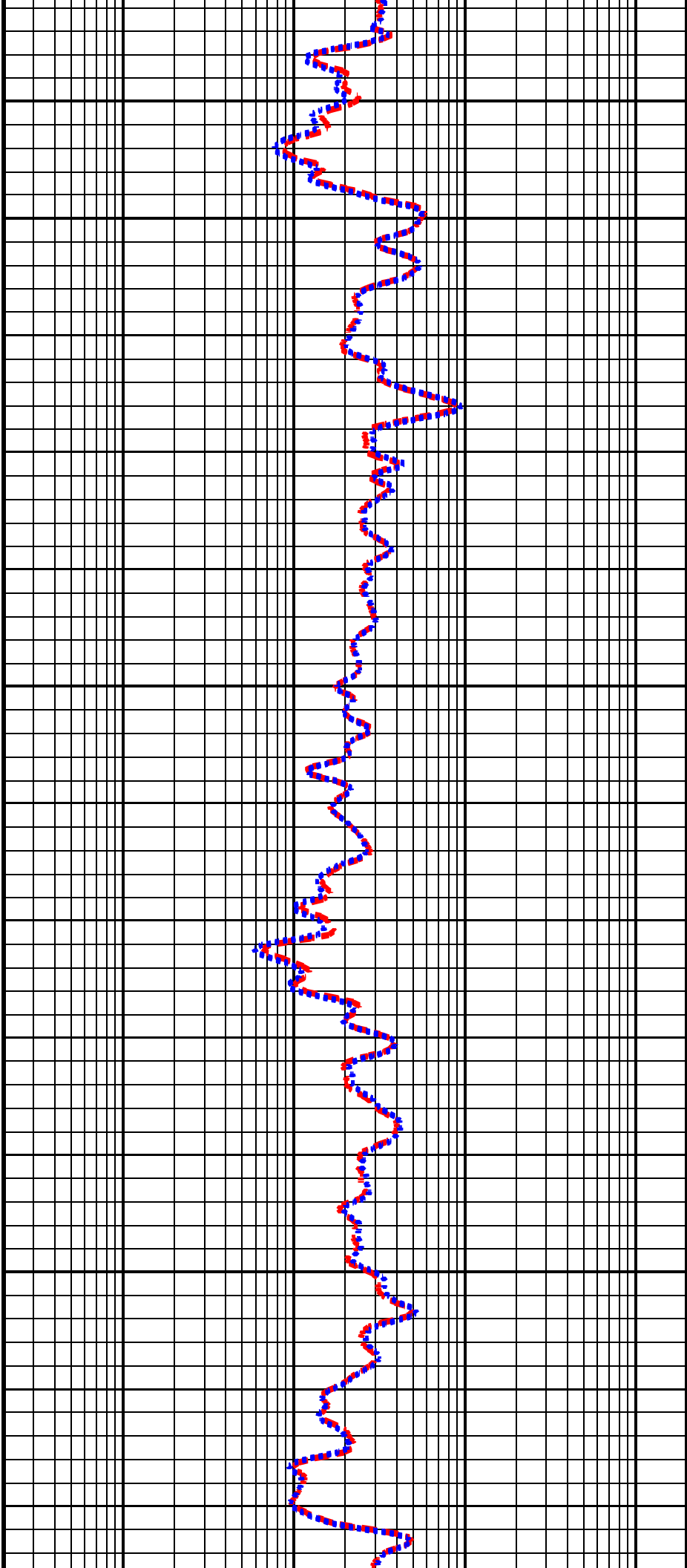




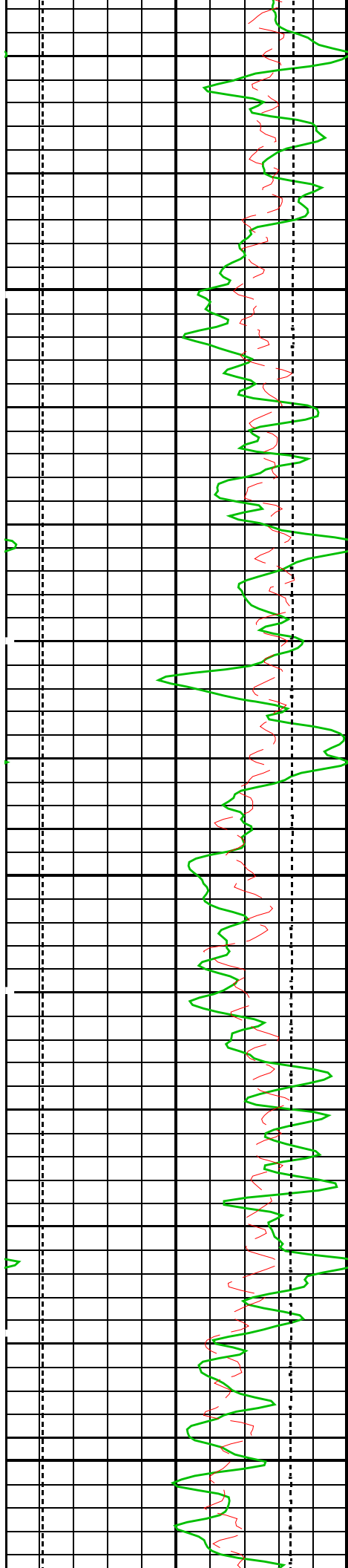
475

500

525



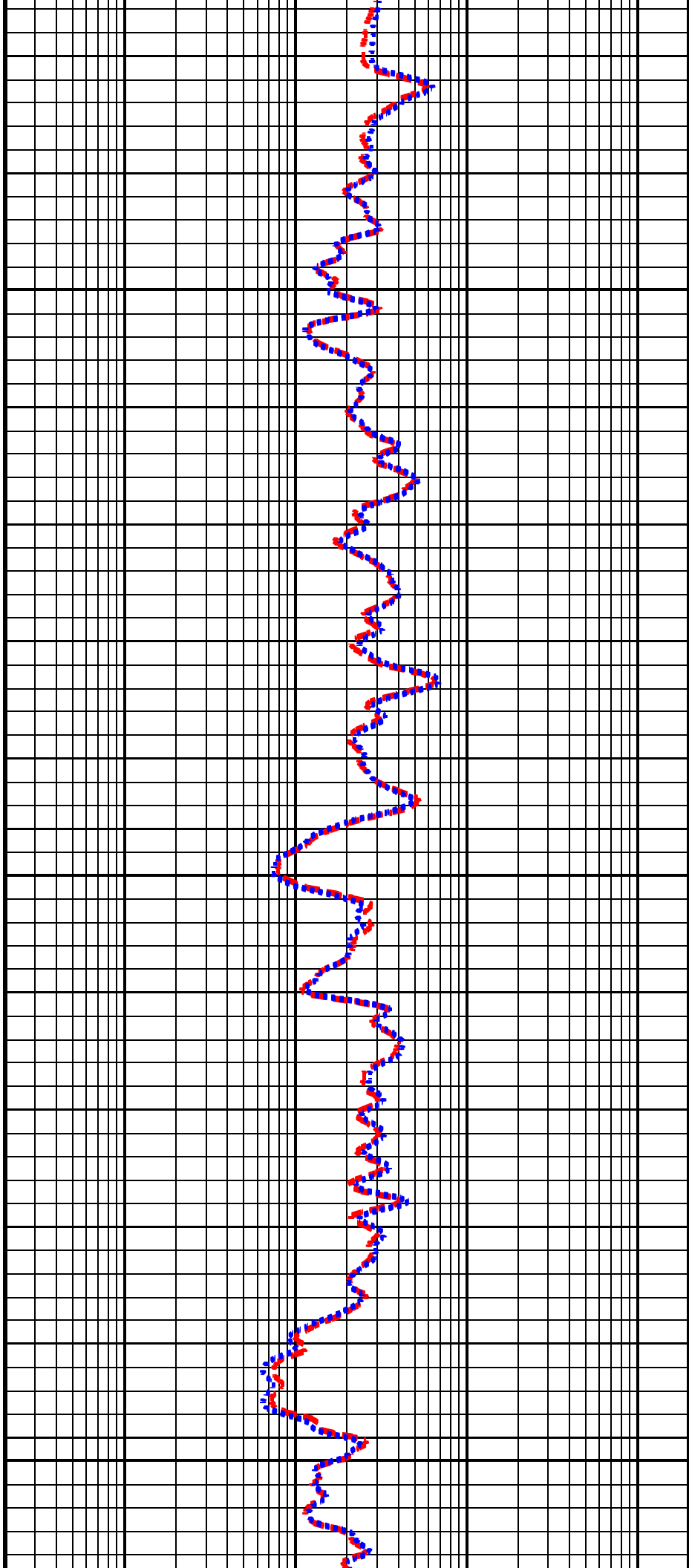


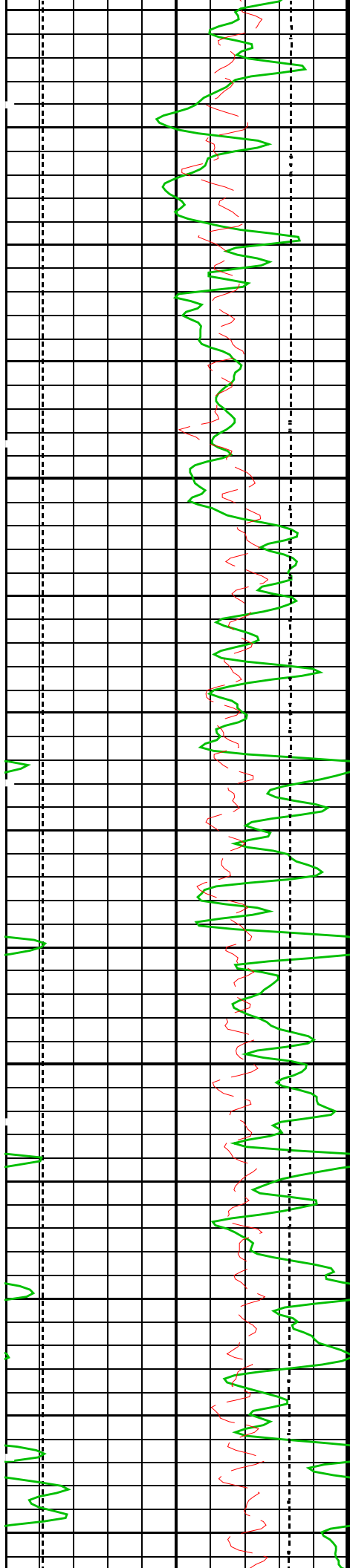


550

575

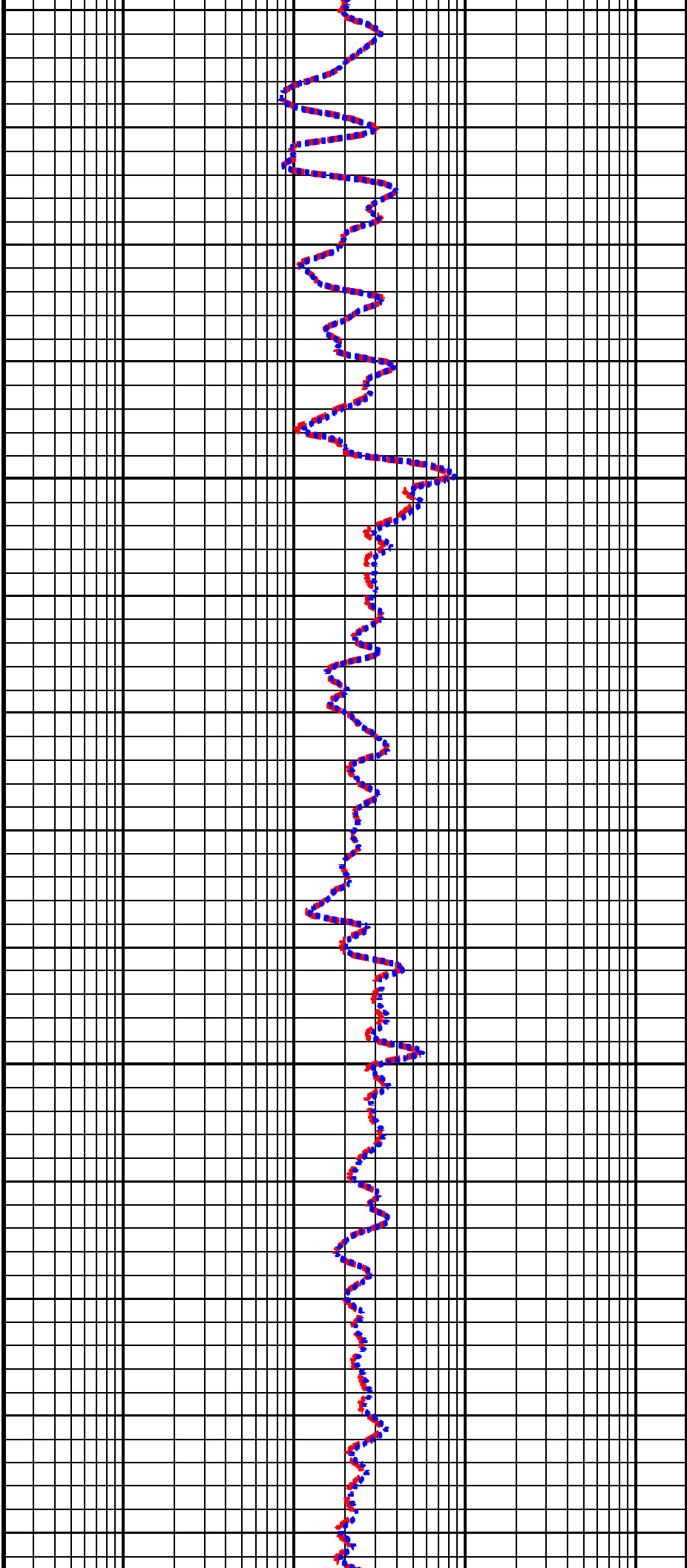
600

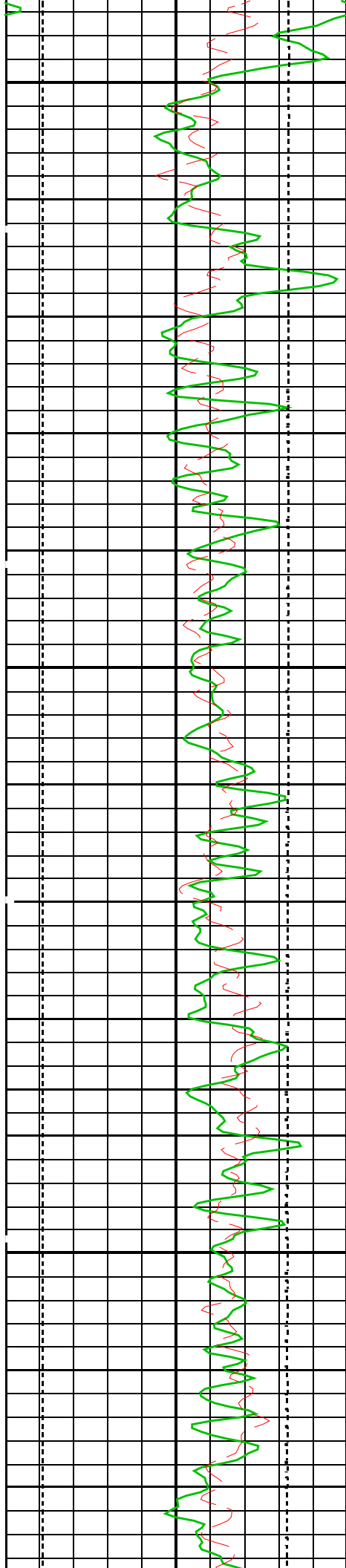




625

650

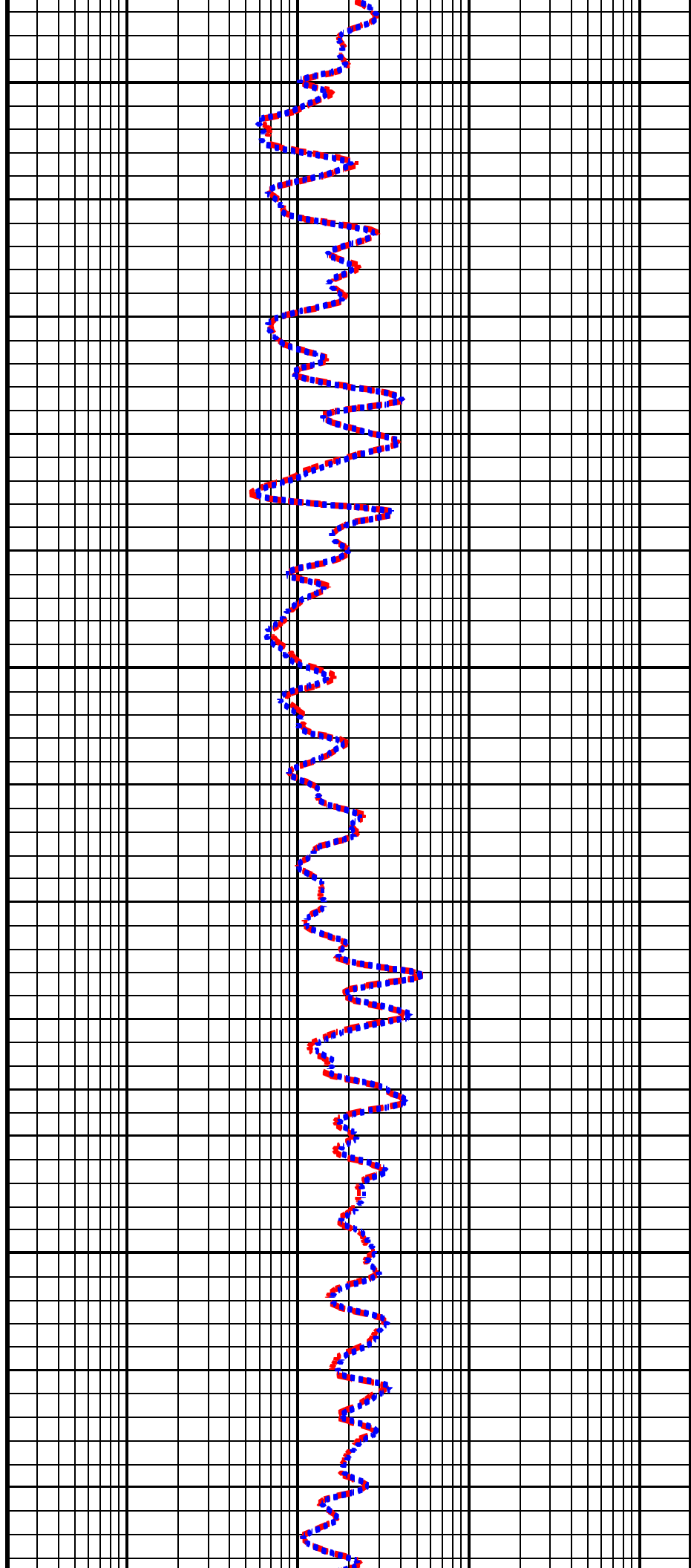


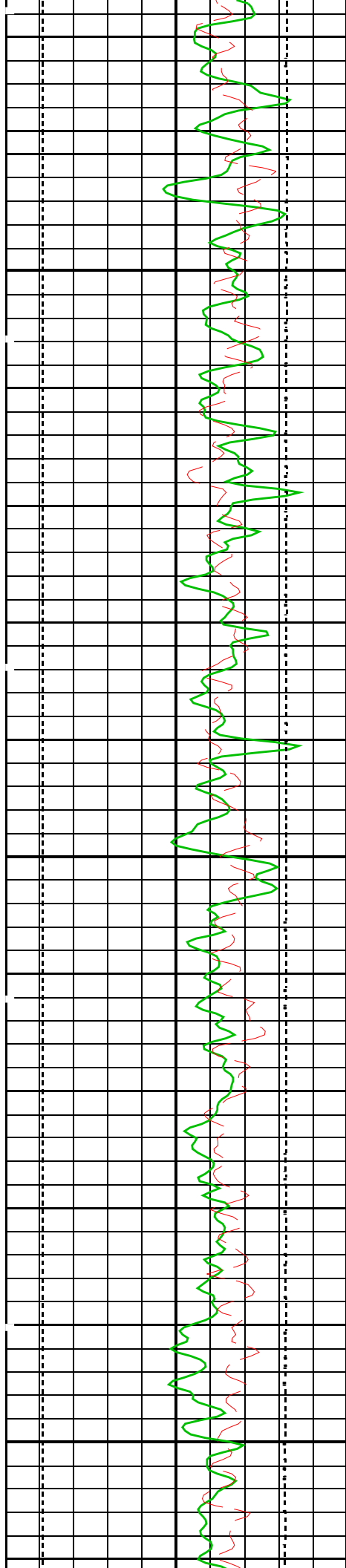


675

700

725

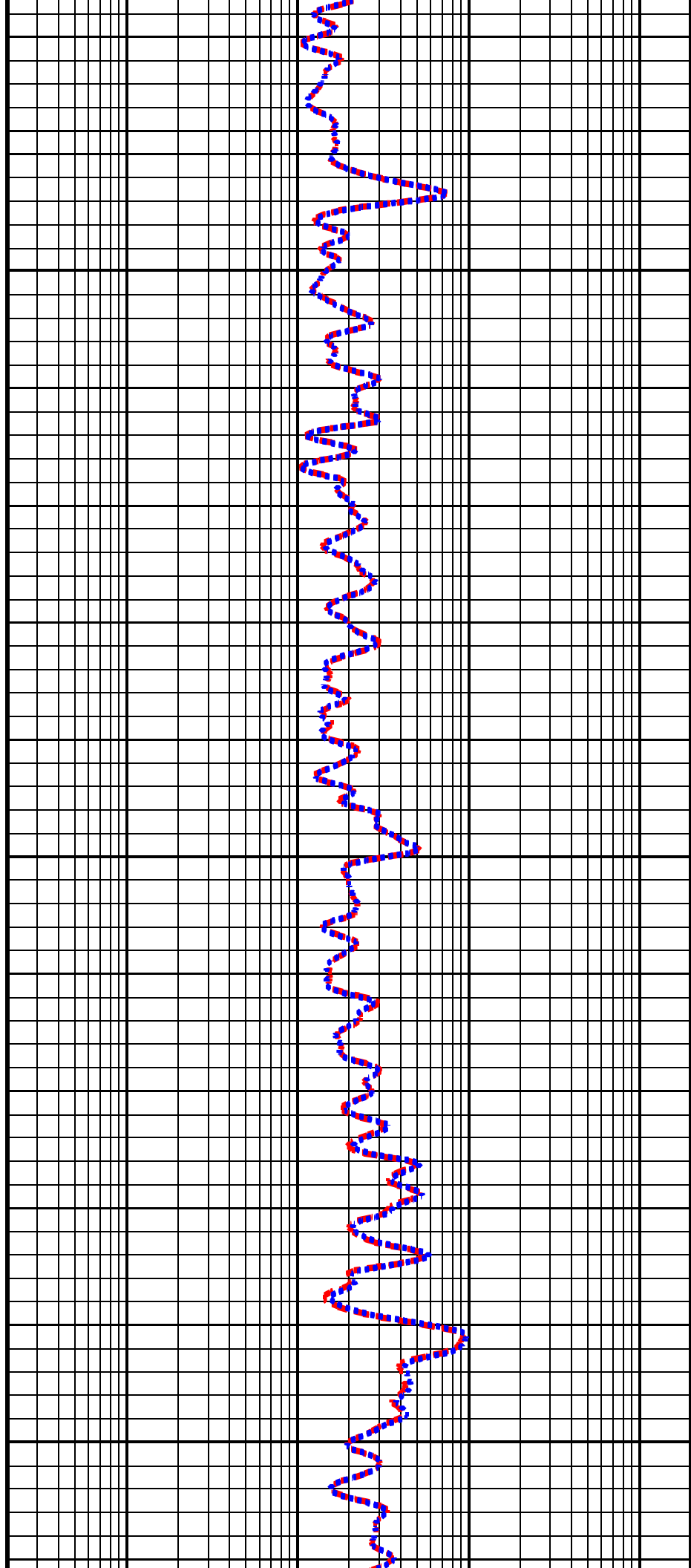


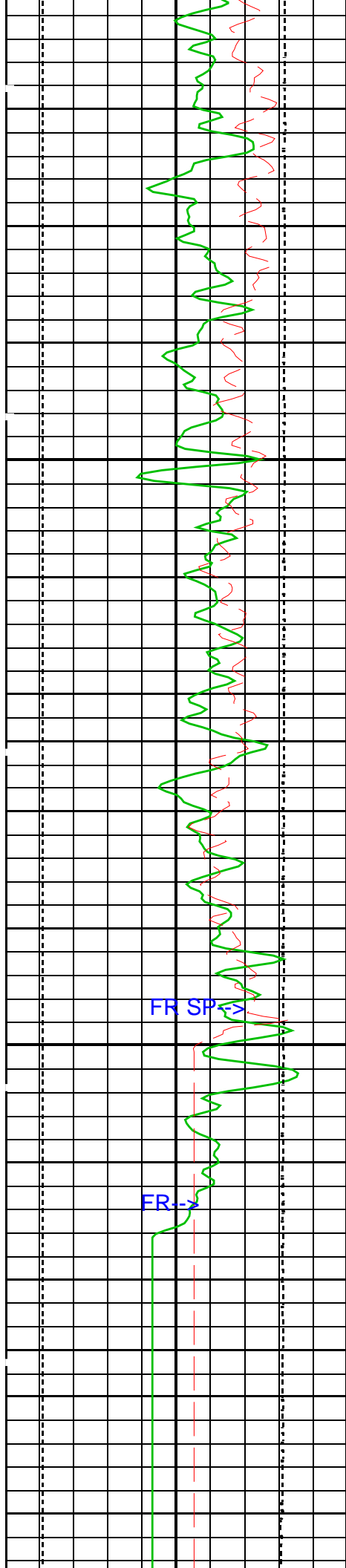


750

775

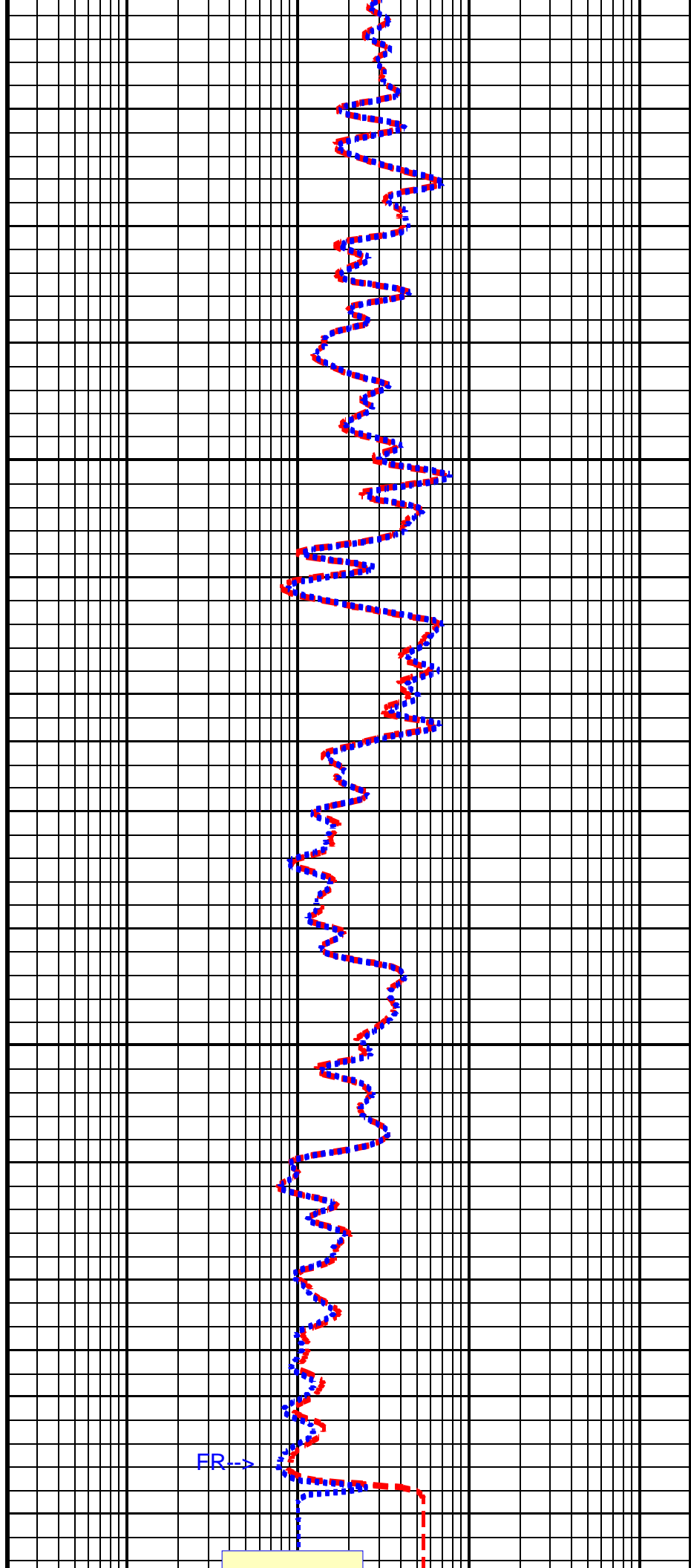
800





825

850



MAIN PASS

<--TD-->

SP (SP) (MV)		
-80		20
Bit Size (BS) (MM)		
75		275
Gamma Ray (GR_STGC) (GAPI)		
0		150
Tension (TENS) 20000 (N)		
		0

Laterolog Deep Resistivity (LLD) (OHMM)		
0.2		2000
Laterolog Shallow Resistivity (LLS) (OHMM)		
0.2		2000

PIP SUMMARY

 Time Mark Every 60 S

Parameters

DLIS Name	Description	Value	
BS	Bit Size	96.000	MM
DO	Depth Offset	0.0	M
DORL	Depth Offset Repeat Analysis	0.0	M
DPRF	DEEP REFERENCE POWER	550	NW
KFAC	K FACTOR	SOND	
LLOO	LATEROLOG LOOP	OFF	
PLRM	POWER LOOP REFERENCE MODE	DEEP	
PP	Playback Processing	NORMAL	
SPNV	SP Next Value	-25	MV
SPRF	SHALLOW REFERENCE POWER	550	NW

Format: DLT\_DST

Vertical Scale: 1:240

Graphics File Created: 03-Aug-2000 07:28

OP System Version: 9C0-413

MCM

MDLT-A	OP9-KP2	DTA-A	OP9-KP2
STGC-B	OP9-KP2	BSP	OP9-KP2

Input DLIS Files

DEFAULT MDLT .004 FN:3 PRODUCER 03-Aug-2000 06:17 874.3 M 69.8 M

Input DLIS Files

DEFAULT MDLT .003 FN:2 PRODUCER 03-Aug-2000 06:05 874.8 M 784.9 M

OP System Version: 9C0-413

MCM

MDLT-A	OP9-KP2	DTA-A	OP9-KP2
STGC-B	OP9-KP2	BSP	OP9-KP2

PIP SUMMARY

 Time Mark Every 60 S

TENS_REP Curve (TENS_REP) 20000 (N)		
		0
SP_REP Curve (SP_REP) (MV)		
-80		20
GR_STGC_REP Curve (GR_STGC_REP) (GAPI)		
0		150
BS_REP Curve (BS_REP) (MM)		
75		275

LLS_REP Curve (LLS_REP) (OHMM)		
0.2		2000
LLD_REP Curve (LLD_REP) (OHMM)		
0.2		2000

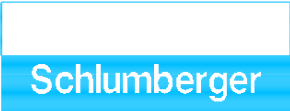
Measurement	Nominal	Master	Before	After	Change	Limit	Units
MEDIUM DUAL LATEROLOG - A Wellsite Calibration - DLT ELECTRONICS CALIBRATION Laterolog Measurement							
Before: Calibration not done							
MEASURED LLD	31.62	N/A	0	N/A	N/A	0.9000	OHMM
MEASURED LLS	31.62	N/A	0	N/A	N/A	0.9000	OHMM
SLIM Telemetry Gamma-ray Cartridge - B Wellsite Calibration - Detector Calibration							
Before: 1-AUG-2000 14:44							
Gamma Ray (Jig - Bkg)	149.1	N/A	149.1	N/A	N/A	13.55	GAPI
Gamma Ray (Calibrated)	155.1	N/A	155.1	N/A	N/A	15.00	GAPI

MEDIUM DUAL LATEROLOG - A / Equipment Identification							
Primary Equipment:							
Auxiliary Equipment:							
Medium Dual Laterolog Electrode				MDLE -			
Medium Dual Laterolog Sonde				MDLS - A			
Medium Dual Laterolog Housing B				MDLH - B			
Medium Dual Laterolog Cartridge				MDLC - A			
Adapter Head 189				AH - 189			
Medium Dual Laterolog Housing A				MDLH - A			
Medium Dual Laterolog Digital Interface				MDLI - A			
Laterolog Control Module				LCM - AA			

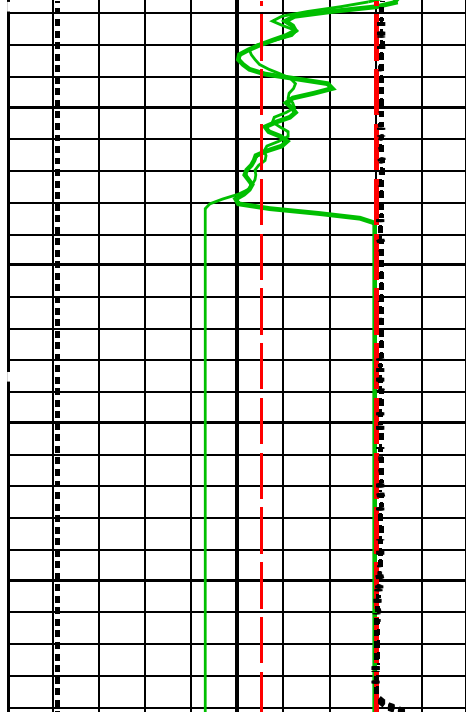
SLIM Telemetry Gamma-ray Cartridge - B / Equipment Identification							
Primary Equipment:							
STGC Gamma-ray & Accelerometer Cartridge				STGC - B			
STGC Telemetry Cartridge				STGC - A			
Auxiliary Equipment:							
SLIM Electronics Cartridge Housing				STGH - B	8007		

SLIM Telemetry Gamma-ray Cartridge - B Wellsite Calibration											
Detector Calibration											
Phase	Gamma Ray Background GAPI		Value	Phase	Gamma Ray (Jig - Bkg) GAPI		Value	Phase	Gamma Ray (Calibrated) GAPI		Value
Before			47.68	Before			149.1	Before			155.1
0 (Minimum)	30.00 (Nominal)	120.0 (Maximum)		135.5 (Minimum)	149.1 (Nominal)	162.6 (Maximum)		140.1 (Minimum)	155.1 (Nominal)	170.1 (Maximum)	
Before: 1-AUG-2000 14:44											

<div>COMPANY:</div> <div>WELL:</div> <div>FIELD:</div> <div>PROVINCE:</div>	<div>DEER LAKE OIL &amp; GAS INC.</div> <div>DEER LAKE OIL &amp; GAS ET AL WESTERN ADVENTURE NO. 1</div> <div>EXPLORATORY</div> <div>NEWFOUNDLAND</div>	BOTTOM LOG INTERVAL	868 m
		SCHLUMBERGER DEPTH	873.5 m
		DEPTH DRILLER	872 m
		KELLY BUSHING	92.5 m
		DRILL FLOOR	92.5 m
		GROUND LEVEL	90 m



DUAL LATEROLOG

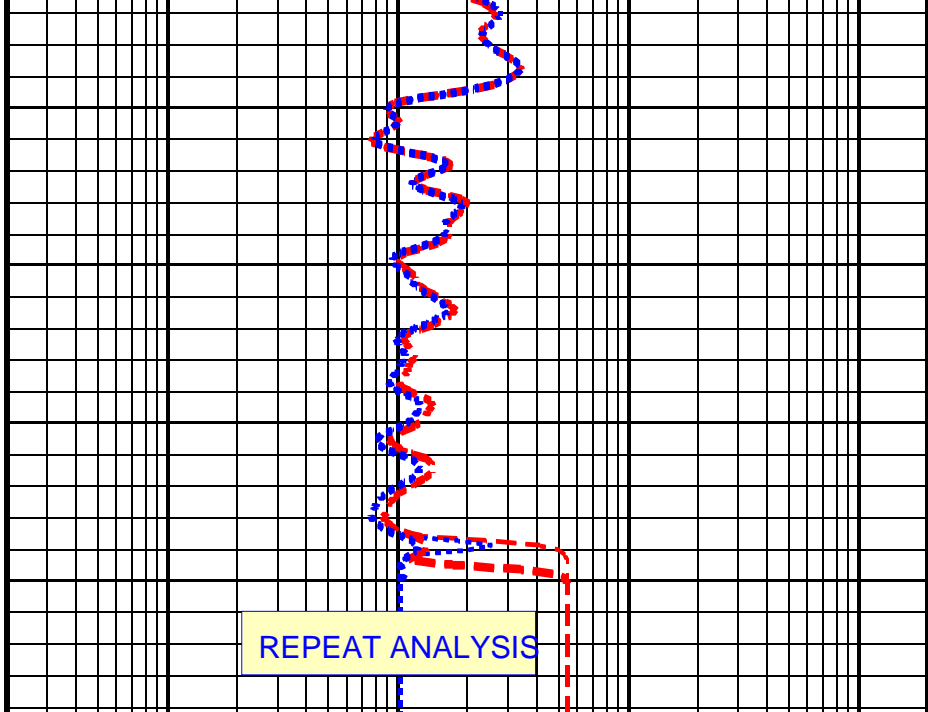


BS\_REP Curve (BS\_REP)  
75 (MM) 275

GR\_STGC\_REP Curve (GR\_STGC\_REP)  
0 (GAPI) 150

SP\_REP Curve (SP\_REP)  
-80 (MV) 20

TENS\_REP Curve  
(TENS\_REP)  
20000 (N) 0



LLD\_REP Curve (LLD\_REP)  
0.2 (OHMM) 2000

LLS\_REP Curve (LLS\_REP)  
0.2 (OHMM) 2000

## PIP SUMMARY

Time Mark Every 60 S

## Parameters

DLIS Name	Description	Value	
BS	Bit Size	96.000	MM
DO	Depth Offset	0.0	M
DORL	Depth Offset Repeat Analysis	0.0	M
DPRF	DEEP REFERENCE POWER	550	NW
KFAC	K FACTOR	SOND	
LLOO	LATEROLOG LOOP	OFF	
PLRM	POWER LOOP REFERENCE MODE	DEEP	
PP	Playback Processing	NORMAL	
SPNV	SP Next Value	-25	MV
SPRF	SHALLOW REFERENCE POWER	550	NW

Format: DLT\_DST\_REP

Vertical Scale: 1:240

Graphics File Created: 03-Aug-2000 07:28

## OP System Version: 9C0-413

MCM

MDLT-A  
STGC-B

OP9-KP2  
OP9-KP2

DTA-A  
BSP

OP9-KP2  
OP9-KP2

## Input DLIS Files

DEFAULT

MDLT .003

FN:2 PRODUCER

03-Aug-2000 06:05

874.8 M

784.9 M



MDLT-A  
STGC-B

OP9-KP2  
OP9-KP2

DTA-A  
BSP

OP9-KP2  
OP9-KP2

PIP SUMMARY

Time Mark Every 60 S

Tension (TENS)  
20000 (N) 0

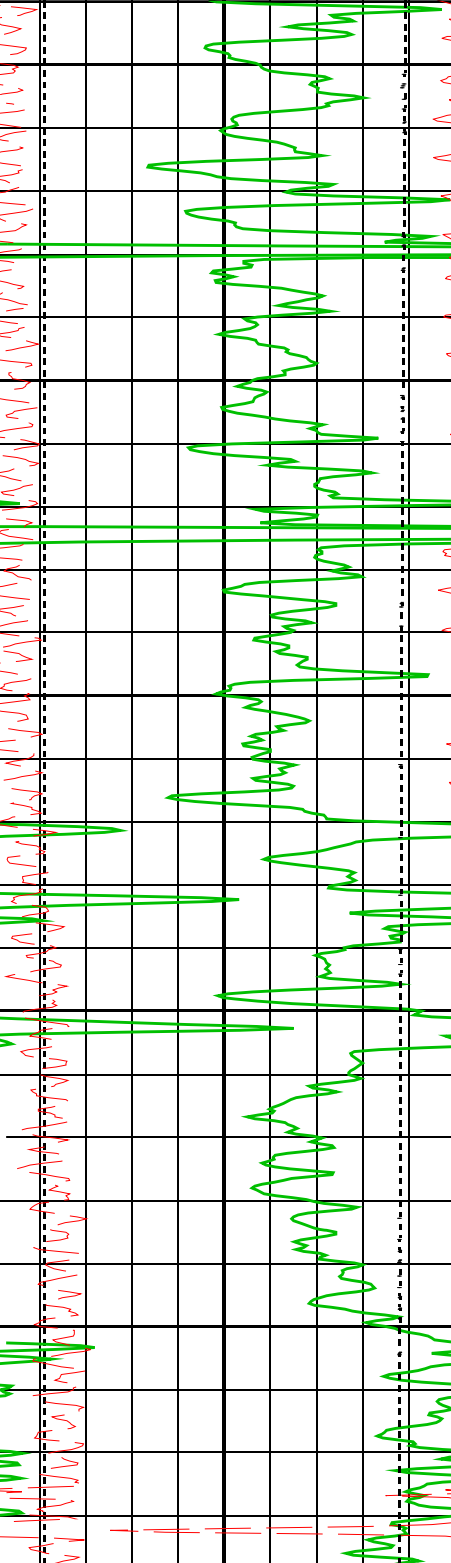
Gamma Ray (GR\_STGC)  
0 (GAPI) 150

Bit Size (BS)  
75 (MM) 275

SP (SP)  
-80 (MV) 20

Laterolog Shallow Resistivity (LLS)  
0.2 (OHMM) 2000

Laterolog Deep Resistivity (LLD)  
0.2 (OHMM) 2000



100

150

MAIN PASS

GAMMA RAY LOGGED TO SURFACE

